



# ROLLER SHADES

STYLE  
7100  
BLACKOUT FABRIC

---

WEAVING  
EXCELLENCE  
WITH  
INNOVATION



Code	Color	SOLAR OPTICAL PROPERTIES				SHGC/G VALUE g-tot (glass & blind)	
		TS	RS	AS	TV	SINGLE 1/4 CL	INSULATING 1 HA
<b>STYLE 7100 - BLACKOUT</b>							
P02	White	0	71	29	0	0.23	0.19
V21	Charcoal	0	71	29	0	0.23	0.19



PROTECTION THAT LIVES ON  
**MICROBAN**<sup>®</sup>

Microban<sup>®</sup> antimicrobial protection inhibits the growth of stain-causing bacteria, mold and mildew on the shade.



PRODUCT CERTIFIED FOR  
 LOW CHEMICAL EMISSIONS  
 UL.COM/GG  
 UL 2818



MIF Seal of Approval



SAFE USE



TRACKLESS TECHNOLOGY



ENERGY SAVING



PRINTABLE



HALOGEN FREE  
 FLAME RETARDANT



PROUDLY MADE  
 IN THE USA

TS = Solar Transmittance  
 RS = Solar Reflectance  
 AS = Solar Absorptance  
 TV = Visual Transmittance

SHGC = Solar Heat Gain Coefficient

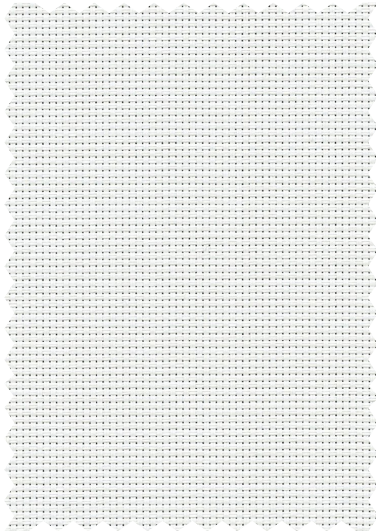
1/4 CL = 1/4" Clear Glass  
 1 HA = 1" Heat Absorbing Glass

Fabrics Installed Internally  
 Zero-Degree Profile Angle

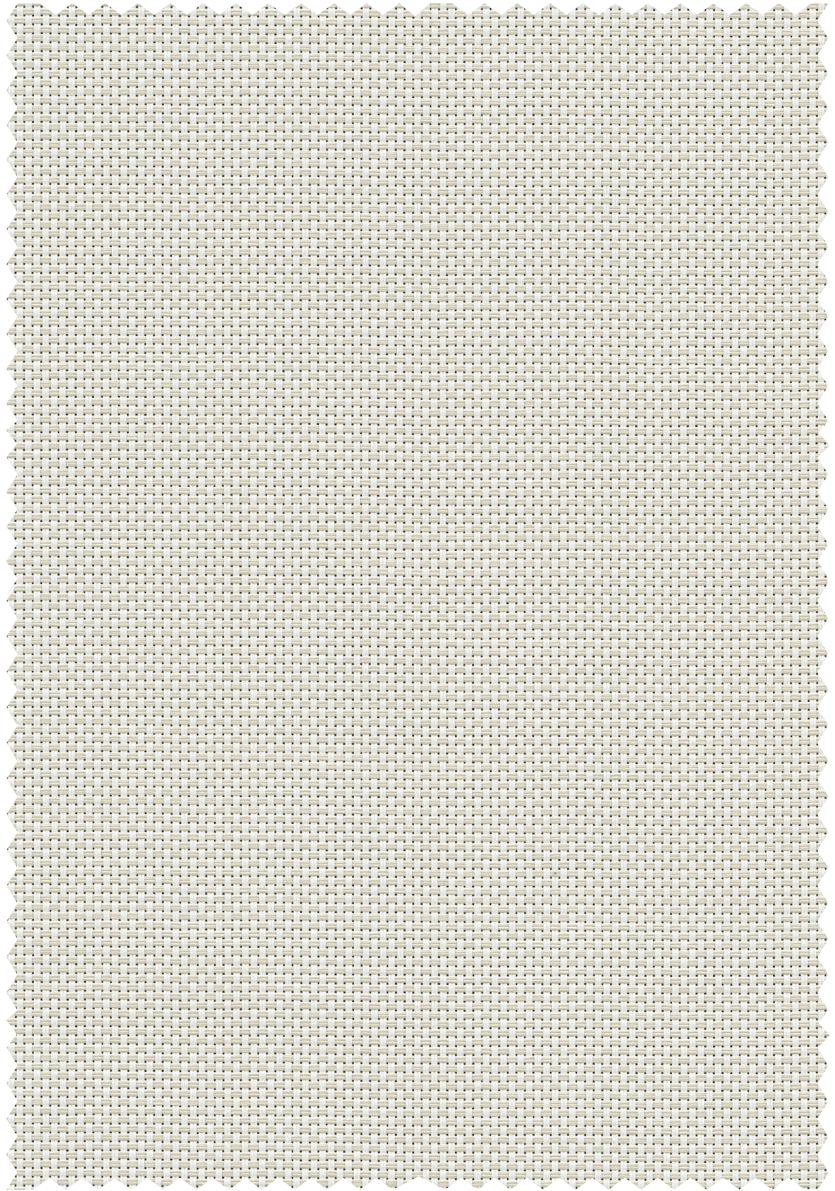
For additional performance values, test references and technical definitions visit us at [phifer.com](http://phifer.com).



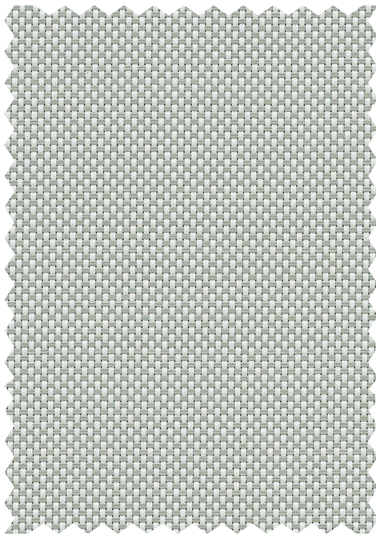
P02 **White**



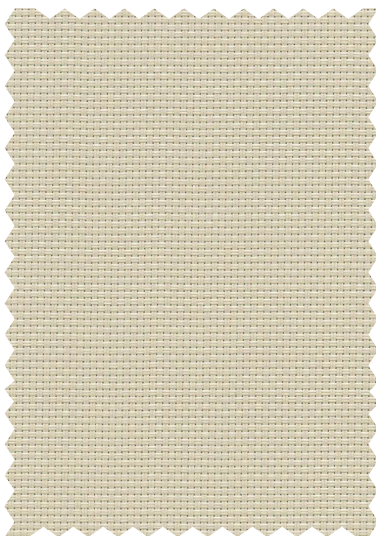
P04 **White/Bone**



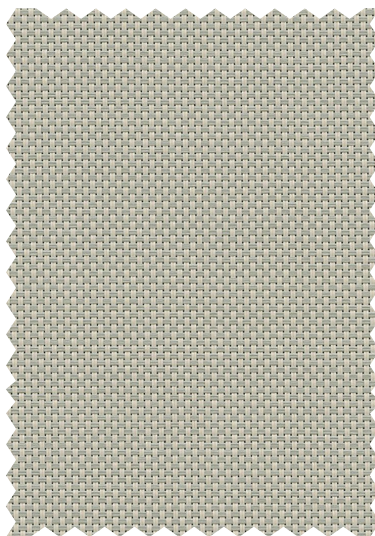
P05 **White/Platinum**



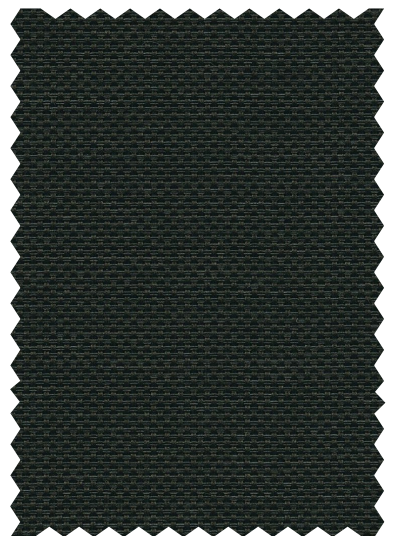
Q05 **Bone**



Q06 **Bone/Platinum**



V21 **Charcoal**





# STYLE 7100 SPECIFICATIONS

Style 7100 is a durable laminated blackout fabric that combines the woven texture of our Style 2000 as the face fabric with a durable vinyl backing to achieve total light blockage. Style 7100 coordinates easily with other SheerWeave fabrics when multi-purpose shades are needed. All Style 7100 colors have a white backing.

<b>FIRE CLASSIFICATION</b>	NFPA 701 TM#1 (small scale) NFPA 101 (Class B Rating) California U.S. Title 19 (small scale)	IBC Section 803.1.1 (Class B Rating) BS 5867 Part 2 Type B Performance CAN/ULC-S 109 (large and small scale)
----------------------------	--	--

*Fire classifications are subject to change. Please go to [phifer.com](http://phifer.com) for the most current information.*

<b>BACTERIA AND FUNGAL RESISTANCE</b>	ASTM E 2180 GREENGUARD Mold and Bacteria Standard Style 2000 face includes Microban antimicrobial additives.	ASTM G21 ASTM D 3273 ASTMG22
<b>ENVIRONMENTAL CERTIFICATION</b>	GREENGUARD Certified to these standards for low chemical emissions into indoor air during product usage	GREENGUARD Gold
<b>SAFE USE</b>	RoHS Compliant ANSI/WCMA A 100.1-2007 for lead content US Consumer Product Safety Commission Section 101	REACH Compliant
<b>WARRANTY</b>	10-year interior	
<b>ACOUSTICAL PERFORMANCE</b>	NRC (Noise Reduction Coefficient) and SAA (Sound Absorption Average) tested in accordance with ASTM C423-09a	
<b>UV PROTECTION</b>	Seal of Approval by the Melanoma International Foundation (MIF) for effectiveness in preventing sun damage to the skin or eyes	
<b>TRACKLESS</b>	TrackLess Technology minimizes the fiberglass yarns' inherent tendencies to track when being rolled up in a shade. With TrackLess Technology these same fabrics now track less, roll up straighter and reduce shade fabrication time.	

*Due to the construction of Style 7100, some cupping may occur. To avoid any cupping the use of side channels is recommended. Railroaded this fabric is not recommended.*

## STYLE 7100

---

<b>WIDTHS</b>	63" and 96" 160 cm and 243.8 cm
<b>ROLL LENGTH</b>	30 Linear Yards 27.4 Linear Meters
<b>COMPOSITION</b>	36% Fiberglass, 64% Vinyl on Fiberglass Laminated with a two-ply 100% PVC blackout film
<b>MESH WEIGHT</b>	21.6 oz/yd <sup>2</sup> 732 g/m <sup>2</sup>
<b>FABRIC THICKNESS</b>	0.025 in 0.64 mm
<b>OPENNESS FACTOR</b>	Opaque
<b>ACOUSTICAL VALUE</b>	NRC .05 / SAA .03