



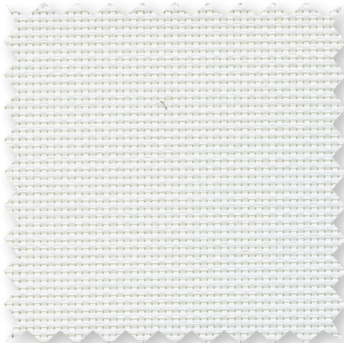
ROLLER SHADES

STYLE
2500

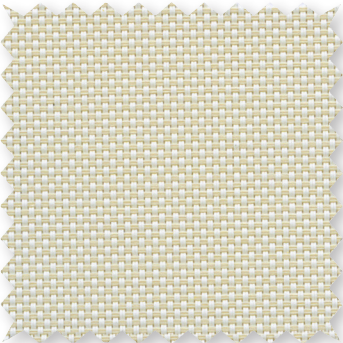
WEAVING
EXCELLENCE
WITH
INNOVATION



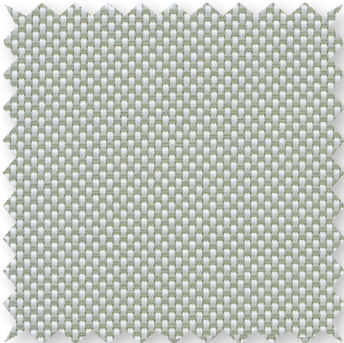
P12 Oyster



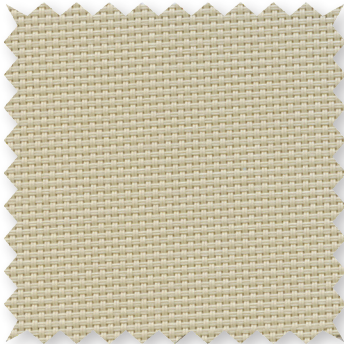
P13 Oyster/Beige



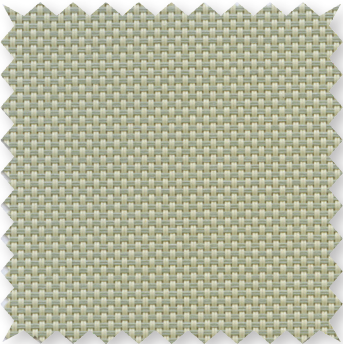
P14 Oyster/Pearl Gray



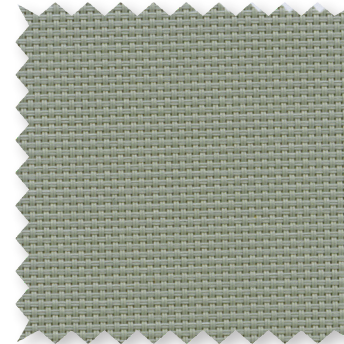
Q20 Beige



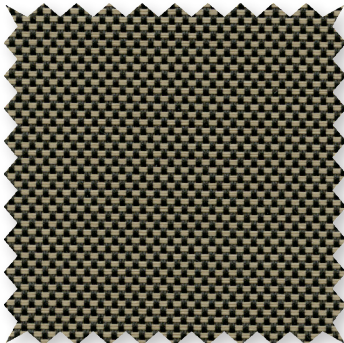
Q21 Beige/Pearl Gray



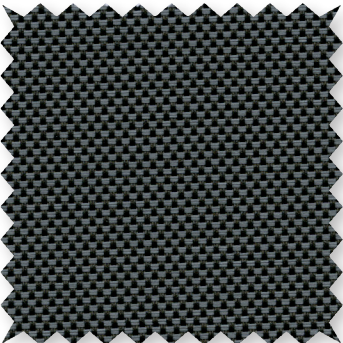
V20 Pearl Gray



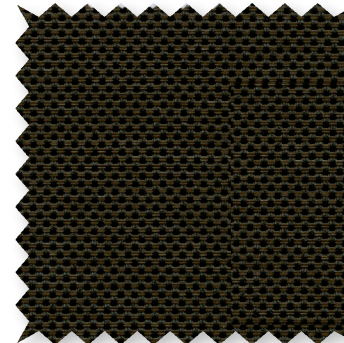
V32 Charcoal/Alpaca



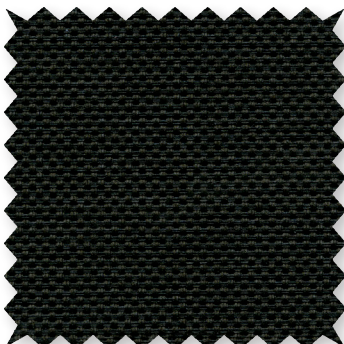
V22 Charcoal/Gray



V24 Charcoal/Chestnut



V21 Charcoal



*Colors may vary based on individual computer settings and should only be used for general reference.

Code	Color	SOLAR OPTICAL PROPERTIES				SHGC/G VALUE	
		TS	RS	AS	TV	<i>SINGLE</i> 1/4 CL	<i>INSULATING</i> 1 HA
STYLE 2500 - 1%							
P12	Oyster	15	68	17	13	0.28	0.22
P13	Oyster/Beige	10	60	30	9	0.31	0.23
P14	Oyster/Pearl Gray	7	50	43	6	0.37	0.25
Q20	Beige	7	50	43	6	0.37	0.25
Q21	Beige/Pearl Gray	5	42	53	5	0.40	0.28
V20	Pearl Gray	3	32	65	3	0.45	0.30
V21	Charcoal	1	4	95	1	0.60	0.37
V22	Charcoal/Gray	2	8	90	3	0.58	0.36
V24	Charcoal/Chestnut	1	6	93	1	0.59	0.37
V32	Charcoal/Alpaca	1	16	83	2	0.54	0.34

PROTECTION THAT LIVES ON

MICROBAN®

Microban® antimicrobial protection inhibits the growth of stain-causing bacteria, mold and mildew on the shade.



PRODUCT CERTIFIED FOR
LOW CHEMICAL EMISSIONS
UL.COM/GG
UL 2818



MIF Seal of Approval



TS = Solar Transmittance
RS = Solar Reflectance
AS = Solar Absorptance
TV = Visual Transmittance

SHGC = Solar Heat Gain Coefficient

1/4 CL = 1/4" Clear Glass
1 HA = 1" Heat Absorbing Glass

Fabrics Installed Internally
Zero-Degree Profile Angle

For additional performance values, test references and technical definitions visit us at www.phifer.com.

STYLE 2500

Manufactured with ease of fabrication in mind, Styles 2500, 2410, 2390 and 2360 are full basketweaves designed expressly for those applications which require a more opaque and nondirectional fabric. Style 2500/2410/2390/2360 can also be used in exterior roller shades.

FIRE CLASSIFICATION	NFPA 701 TM#1 (small scale)	BS 5867 Part 2 Type B Performance
	NFPA 701 TM#2 (large scale)	CAN/ULC-S 109 (large and small scale)
	NFPA 101 (Class A Rating)	CAN/CGSB2-4.162-M80
	California U.S. Title 19 (small scale)	IBC Section 803.1.1 (Class A Rating)

Fire classifications are subject to change. It is the user's responsibility to check for the most current fire ratings at phifer.com.

BACTERIA AND FUNGAL RESISTANCE	ASTM E 2180	ASTM G21	AATCC30 Part 3	ASTM D 3273	ASTM G22
	GREENGUARD Mold and Bacteria Standard ASTM 6329 includes Microban antimicrobial additives				
ENVIRONMENTAL CERTIFICATION	GREENGUARD	GREENGUARD Gold			
	Certified to these standards for low chemical emissions into indoor air during product usage				
SAFE USE	RoHS/Directive 2002/95/EC	REACH (EC 1907/2006) compliant			
	ANSI/WCMA A 100.1-2007 for lead content				
	US Consumer Product Safety Commission Section 101				
WARRANTY	10-year interior	5-year exterior			
	NRC (Noise Reduction Coefficient) and SAA (Sound Absorption Average) tested in accordance with ASTM C423-09a				
ACOUSTICAL PERFORMANCE					
UV PROTECTION	Seal of Approval by the Melanoma International Foundation (MIF) for effectiveness in preventing sun damage to the skin or eyes				
TRACKLESS	TrackLess Technology minimizes the fiberglass yarns' inherent tendencies to track when being rolled up in a shade. With TrackLess Technology these same fabrics now track less, roll up straighter and reduce shade fabrication time.				

STYLE 2500

WIDTHS	63", 98" and 126" 160 cm, 248.9 cm and 320 cm
ROLL LENGTH	30 Linear Yards 27.4 Linear Meters
COMPOSITION	37% Fiberglass 63% Vinyl on Fiberglass
MESH WEIGHT	16.2 oz/yd ² 549 g/m ²
FABRIC THICKNESS	0.024 in 0.61 mm
OPENNESS FACTOR	Approximately 1%
UV BLOCKAGE	Approximately 99%
ACOUSTICAL VALUE	NRC .55 / SAA .54