



STYLE
4901

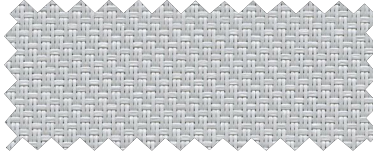
WEAVING
EXCELLENCE
WITH
INNOVATION



P06 Chalk



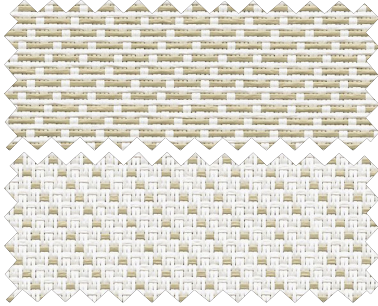
Q27 Soft Grey



V10 Ebony



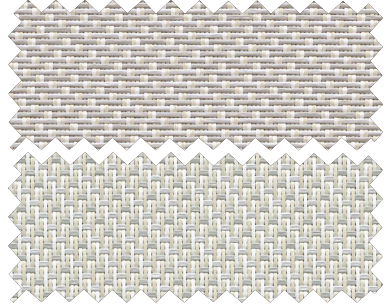
P26 Chalk/Wheat - face
Chalk/Wheat - back



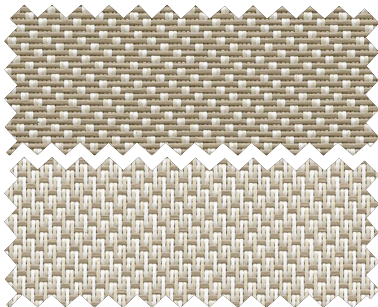
Q23 Whitesands - face
Whitesands - back



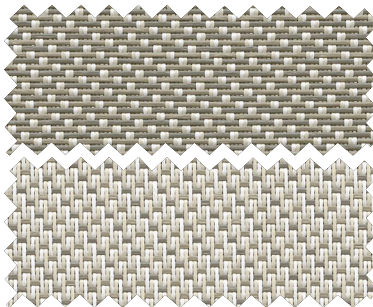
Q25 Birch - face
Birch - back



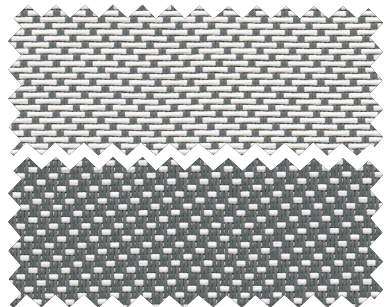
Q22 Flaxen - face
Flaxen - back



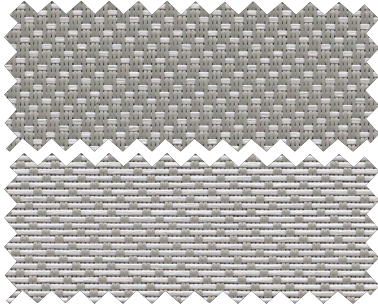
Q26 Cobblestone - face
Cobblestone - back



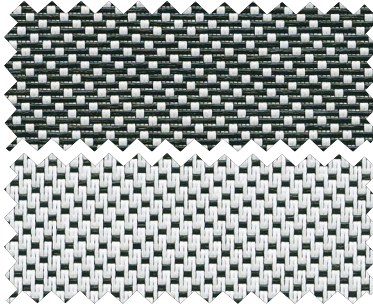
V03 Pewter/Chalk - face
Pewter/Chalk - back



Q07 Kettal Grey - face
Kettal Grey - back



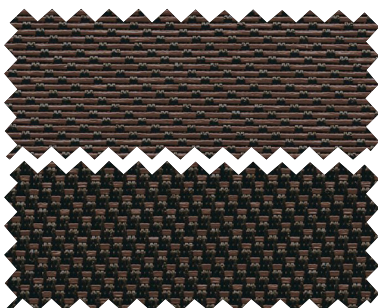
P25 Chalk/Black - face
Chalk/Black - back



V28 Slate - face
Slate - back



Q16 Tobacco - face
Tobacco - back



The unique twill weave of Styles 4901 creates two fabrics in one, as distinct yet complimentary colors are exposed on the face and back.

Code	Color	SOLAR OPTICAL PROPERTIES				SHGC/G VALUE g-tot (glass & blind)	
		TS	RS	AS	TV	SINGLE 1/4 CL	INSULATING 1 HA
STYLE 4901 - 1%							
P06	Chalk	9	83	8	7	0.18	0.17
P25	Chalk/Black - face	1	22	77	1	0.50	0.32
P25	Chalk/Black - back	1	54	45	1	0.33	0.24
P26	Chalk/Wheat - face	6	65	29	6	0.28	0.22
P26	Chalk/Wheat - back	6	75	19	6	0.22	0.19
Q07	Kettal Grey - face	3	48	49	3	0.37	0.26
Q07	Kettal Grey - back	3	37	60	3	0.43	0.29
Q16	Tobacco - face	2	8	90	2	0.58	0.36
Q16	Tobacco - back	2	6	92	2	0.59	0.37
Q22	Flaxen - face	3	42	55	3	0.40	0.27
Q22	Flaxen - back	3	57	40	3	0.31	0.23
Q23	Whitesands - face	7	65	28	6	0.28	0.22
Q23	Whitesands - back	7	67	26	6	0.27	0.21
Q25	Birch - face	5	57	38	4	0.32	0.23
Q25	Birch - back	5	64	31	4	0.28	0.22
Q26	Cobblestone - face	3	36	61	4	0.43	0.29
Q26	Cobblestone - back	3	55	42	4	0.33	0.24
Q27	Soft Grey	5	58	37	4	0.31	0.23
V03	Pewter/Chalk - face	3	56	41	4	0.32	0.23
V03	Pewter/Chalk - back	3	30	67	4	0.46	0.30
V10	Ebony	1	5	94	1	0.59	0.36
V28	Slate - face	2	11	87	3	0.57	0.36
V28	Slate - back	2	8	90	3	0.58	0.36
STYLE 4903 - 3%							
P06	Chalk	11	81	8	10	0.19	0.17
P25	Chalk/Black - face	3	25	72	3	0.49	0.32
P25	Chalk/Black - back	3	56	41	3	0.32	0.23
P26	Chalk/Wheat - face	9	65	26	9	0.28	0.22
P26	Chalk/Wheat - back	9	73	18	9	0.23	0.19
Q07	Kettal Grey - face	4	47	49	5	0.37	0.26
Q07	Kettal Grey - back	4	37	59	5	0.43	0.29
Q16	Tobacco - face	3	8	89	4	0.58	0.37
Q16	Tobacco - back	3	6	91	4	0.59	0.37
Q22	Flaxen - face	6	43	51	7	0.40	0.27
Q22	Flaxen - back	6	57	37	7	0.32	0.23
Q23	Whitesands - face	9	63	28	8	0.30	0.23
Q23	Whitesands - back	9	67	24	8	0.27	0.21
Q25	Birch - face	7	56	37	7	0.25	0.24
Q25	Birch - back	7	63	30	7	0.29	0.22
Q26	Cobblestone - face	4	38	58	4	0.43	0.29
Q26	Cobblestone - back	4	56	40	4	0.32	0.23
Q27	Soft Grey	8	57	35	8	0.32	0.23
V03	Pewter/Chalk - face	4	53	43	5	0.34	0.24
V03	Pewter/Chalk - back	4	29	67	5	0.47	0.30
V10	Ebony	3	5	92	5	0.60	0.37
V28	Slate - face	3	12	85	4	0.55	0.35
V28	Slate - back	3	8	89	4	0.58	0.37

PROTECTION THAT LIVES ON 
MICROBAN[®]
 Microban[®] antimicrobial protection inhibits the growth of stain-causing bacteria, mold and mildew on the shade.



PRODUCT CERTIFIED FOR
 LOW CHEMICAL EMISSIONS
 UL.COM/GG
 UL 2818



MIF Seal of Approval



TS = Solar Transmittance
 RS = Solar Reflectance
 AS = Solar Absorptance
 TV = Visual Transmittance

SHGC = Solar Heat Gain Coefficient

1/4 CL = 1/4" Clear Glass
 1 HA = 1" Heat Absorbing Glass

Fabrics Installed Internally
 Zero-Degree Profile Angle

For additional performance values, test references and technical definitions visit us at www.phifer.com.

STYLE 4901 SPECIFICATIONS

Form follows function in this unique combination of color and weave. Using thin and light weight vinyl-coated polyester yarns, Styles 4901 and 4903 are as versatile as they are beautiful. Styles 4901 and 4903 can also be used in exterior shading systems.

FIRE CLASSIFICATION	California U.S. Title 19 (small scale)	NFPA 701 TM#1 (small scale)
	NFPA 101 (Class A Rating)	IBC Section 803.1.1 (Class A Rating)
	BS 5867 Part 2 Type B Performance	NFPA 701 TM#2 (large scale)
	CAN/ULC-S 109 (large and small scale)	CAN/CGSB2-4.162-M80

Fire classifications are subject to change. Please go to phifer.com for the most current information.

BACTERIA AND FUNGAL RESISTANCE	ASTM E 2180	ASTM G21	ASTM G22	AATCC30 Part 3	ASTM D 3273
	GREENGUARD Mold and Bacteria Standard ASTM 6329				
	includes Microban antimicrobial additives				

ENVIRONMENTAL CERTIFICATION	GREENGUARD	GREENGUARD Gold
	Certified to these standards for low chemical emissions into indoor air during product usage	

LEAD FREE	RoHS/Directive 2002/95/EC	REACH (EC 1907/2006) compliant
	ANSI/WCMA A 100.1-2007 for lead content	
	US Consumer Product Safety Commission Section 101	

WARRANTY	10-year interior	5-year exterior
-----------------	------------------	-----------------

ACOUSTICAL PERFORMANCE	NRC (Noise Reduction Coefficient) and SAA (Sound Absorption Average) tested in accordance with ASTM C423-09a
-------------------------------	--

UV PROTECTION	Seal of Approval by the Melanoma International Foundation (MIF) for effectiveness in preventing sun damage to the skin or eyes
----------------------	--

STYLE 4901

WIDTHS	63" and 98" 160 cm and 248.9 cm
ROLL LENGTH	30 Linear Yards 27.4 Linear Meters
COMPOSITION	17% Polyester 83% Vinyl on Polyester
MESH WEIGHT	16.2 oz/yd ² 549.27 g/m ²
FABRIC THICKNESS	0.028 in 0.71 mm
OPENNESS FACTOR	Approximately 1%
UV BLOCKAGE	Approximately 99%
ACOUSTICAL VALUE	NRC .60 / SAA .59