



ROLLER SHADES

STYLE
2701

WEAVING
EXCELLENCE
WITH
INNOVATION



Code	Color	SOLAR OPTICAL PROPERTIES				SHGC/G VALUE g-tot (glass & blind)		SOLAR OPTICAL PROPERTIES				SHGC/G VALUE g-tot (glass & blind)	
		TS	RS	AS	TV	SINGLE 1/4 CL	INSULATING 1 HA	TS	RS	AS	TV	SINGLE 1/4 CL	INSULATING 1 HA
STYLE 2701 FACE - 1%						STYLE 2701 BACK							
P12	Oyster	19	69	12	19	0.32	0.25	19	70	11	18	0.32	0.24
P13	Oyster/Beige	15	55	30	13	0.40	0.29	15	62	23	12	0.36	0.26
P14	Oyster/Pearl Gray	11	38	51	9	0.50	0.33	10	54	36	9	0.40	0.28
P28	Oyster/Charcoal	6	11	83	6	0.66	0.41	5	42	53	5	0.46	0.32
P91	Oyster/Pewter	6	22	72	5	0.59	0.38	6	48	46	5	0.43	0.30
P92	Oyster/Chestnut	7	16	77	5	0.63	0.39	6	45	49	5	0.44	0.31
V21	Charcoal	3	4	93	3	0.69	0.43	3	4	93	3	0.69	0.43
V22	Charcoal/Gray	3	14	83	3	0.63	0.40	3	6	91	3	0.68	0.42
V64	Charcoal/Slate	4	30	66	4	0.53	0.35	4	10	86	4	0.66	0.41
V65	Charcoal/Taupe	4	25	71	3	0.56	0.36	4	9	87	3	0.67	0.41
V66	Charcoal/Brown	4	17	79	4	0.62	0.39	4	7	89	4	0.68	0.42

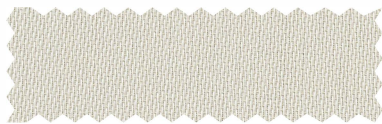
P12 Oyster



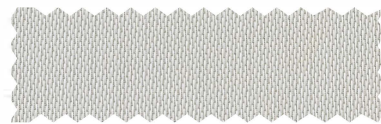
V21 Charcoal



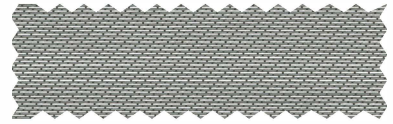
P13 Oyster / Beige - face
Oyster / Beige - back



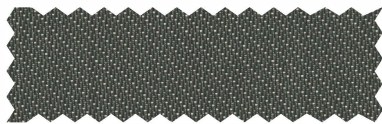
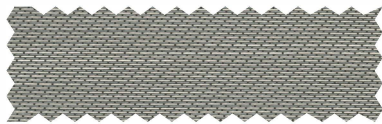
P14 Oyster / Pearl Gray - face
Oyster / Pearl Gray - back



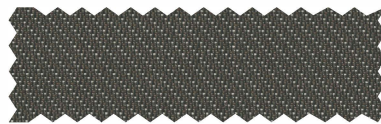
V64 Charcoal / Slate - face
Charcoal / Slate - back



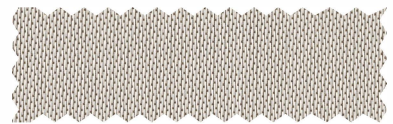
V65 Charcoal / Taupe - face
Charcoal / Taupe - back



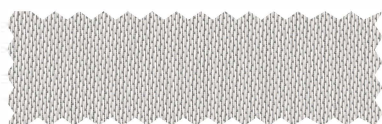
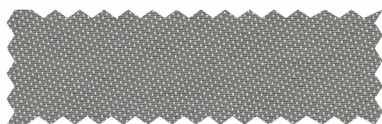
V66 Charcoal / Brown - face
Charcoal / Brown - back



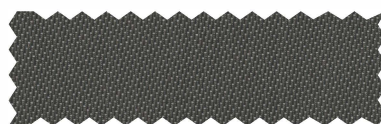
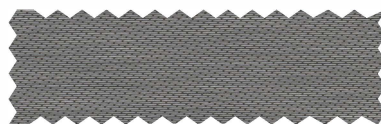
P92 Oyster / Chestnut - face
Oyster / Chestnut - back



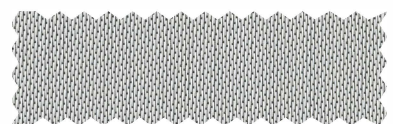
P91 Oyster / Pewter - face
Oyster / Pewter - back



V22 Charcoal / Gray - face
Charcoal / Gray - back



P28 Oyster / Charcoal - face
Oyster / Charcoal - back



PROTECTION THAT LIVES ON
MICROBAN

Microban® antimicrobial protection inhibits the growth of stain-causing bacteria, mold and mildew on the shade.



MIF Seal of Approval



SAFE USE



TRACKLESS TECHNOLOGY



PROUDLY MADE
IN THE USA



GREENGUARD
GOLD



PRINTABLE



ENERGY SAVING



HALOGEN FREE
FLAME RETARDANT

STYLE 2701

Styles 2701, 2703, 2705 and 2710 are woven from a unique twill pattern that displaces the individual yarns to create a two-sided fabric for maximum performance in heat reduction, glare reduction and improved visibility. Styles 2701, 2703, 2705 and 2710 can also be used in exterior roller shades.

FIRE CLASSIFICATION	NFPA 701 TM#1 (small scale)	BS 5867 Part 2 Type B Performance
	NFPA 701 TM#2 (large scale)	CAN/ULC-S 109 (large and small scale)
	NFPA 101 (Class A Rating)	CAN/CGSB2-4.162-M80
	California U.S. Title 19 (small scale)	IBC Section 803.1.1 (Class A Rating)

Fire classifications are subject to change. Please go to phifer.com for the most current information.

BACTERIA AND FUNGAL RESISTANCE	ASTM E 2180	ASTM G21	ASTM G22	AATCC30 Part 3	ASTM D 3273
	GREENGUARD Mold and Bacteria Standard ASTM 6329				
	Includes Microban antimicrobial additives				

ENVIRONMENTAL CERTIFICATION	GREENGUARD	GREENGUARD Gold
	Certified to these standards for low chemical emissions into indoor air during product usage	

SAFE USE	ANSI/WCMA A 100.1-2007 for lead content	US Consumer Product Safety Commission Section 101
	RoHS/Directive 2002/95/EC	REACH (EC 1907/2006) compliant

WARRANTY	10-year interior	5-year exterior
-----------------	------------------	-----------------

ACOUSTICAL PERFORMANCE	NRC (Noise Reduction Coefficient) and SAA (Sound Absorption Average) tested in accordance with ASTM C423-09a	
-------------------------------	--	--

UV PROTECTION	Seal of Approval by the Melanoma International Foundation (MIF) for effectiveness in preventing sun damage to the skin or eyes	
----------------------	--	--

TRACKLESS	TrackLess Technology minimizes the fiberglass yarns' inherent tendencies to track when being rolled up in a shade. With TrackLess Technology these same fabrics now track less, roll up straighter and reduce shade fabrication time.	
------------------	---	--

STYLE 2701

WIDTHS	63", 98" and 126" 160 cm, 248.9 cm and 320 cm
ROLL LENGTH	30 Linear Yards 27.4 Linear Meters
COMPOSITION	36% Fiberglass 64% Vinyl on Fiberglass
MESH WEIGHT	14.6 oz/yd ² 495 g/m ²
FABRIC THICKNESS	0.027 in 0.66 mm
OPENNESS FACTOR	Approximately 1%
UV BLOCKAGE	Approximately 99%
ACOUSTICAL VALUE	NRC .15 / SAA .15